

LEVEL 5 FLOOR PLAN
LEVEL 5 FFL 53.400

© COPYRIGHT - These drawings remain the exclusive copyright of ADM Architects. Reproductions in any form whether electronic, digital or otherwise shall not be allowed except by express permission granted in writing by ADM Architects.
 FIGURED DIMENSIONS - These drawings are not to be scaled. Figured dimensions shall be used in all cases.
 DISCREPANCIES IN DIMENSIONS/POSITIONS/LOCATIONS/FINISHES - The Contractor is to verify any dimensional location or finish discrepancy with ADM Architects prior to any physical construction or setting out so that ADM Architects is given the opportunity to resolve potential discrepancies or conflicts in sufficient time without causing abortive work. The Contractor shall be responsible for notifying ADM Architects of any such discrepancy or conflict that may arise on site.
 CO-ORDINATION OF WORKS - These drawings are to be read in conjunction with the full set of consultant's drawings, specifications, reports and DA conditions.
 NOMINATED ARCHITECT - The nominated Architect for ADM Projects (Australia) Pty Ltd T/AS ADM Architects is Angelo Di Martino ARB No.7609

ISSUE	DATE	DESCRIPTION
A	30.05.11	Issued for DA
B	20.09.11	amended for DA approval

NOT FOR CONSTRUCTION



94 Kembla St, Wollongong NSW 2500 PO Box 3061 Wollongong
 ph: 02 4228 6400 fax: 02 4228 6455 www.admarchitects.com.au

Project
 RESIDENTIAL DEVELOPMENT COMPRISING OF
 15 X 2 BED UNITS, 17 X 3 BED UNITS &
 2 X 3 BED PENTHOUSE UNITS WITH
 7 VISITORS PARKING SPACES &
 BASEMENT PARKING FOR 56 CARS
 At
 LOTS A & B D.P 415263, LOT 2 D.P 331687
 No.32 & 34 CHURCH STREET
 WOLLONGONG

For
PNA DEVELOPMENTS pty Ltd

Title
 DEVELOPMENT APPLICATION
 LEVEL 5 FLOOR PLAN

Scale 1:100@A1 1:200@A3	Date JUNE 2011
Drawn djm	Checked ADM
Project No. 2010-27	Drawing No. A-08
	Issue B

© COPYRIGHT - These drawings remain the exclusive copyright of ADM Architects. Reproductions in any form whether electronic, digital or otherwise shall not be allowed except by express permission granted in writing by ADM Architects.

FIGURED DIMENSIONS - These drawings are not to be scaled. Figured dimensions shall be used in all cases.

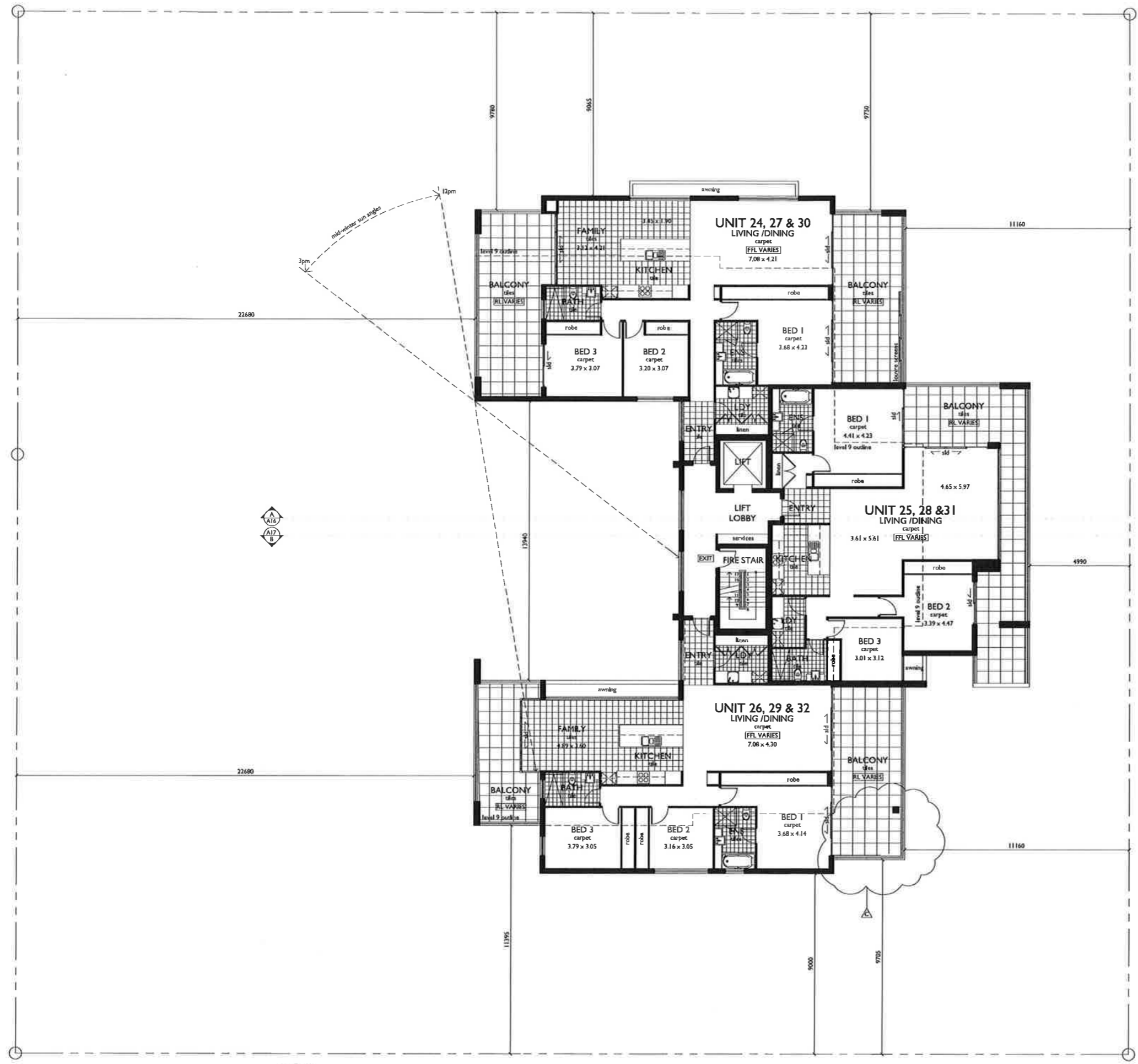
DISCREPANCIES IN DIMENSIONS/POSITIONS/LOCATIONS/FINISHES - The Contractor is to verify any dimensional, location or finish discrepancy with ADM Architects prior to any physical construction or setting out so that ADM Architects is given the opportunity to resolve potential discrepancies or conflicts in sufficient time without causing abortive work. The Contractor shall be responsible for notifying ADM Architects of any such discrepancy or conflict that may arise on site.

COORDINATION OF WORKS - These drawings are to be read in conjunction with the full set of consultant's drawings, specifications, reports and DA conditions.

NOMINATED ARCHITECT - The nominated Architect for ADM Projects (Australia) Pty Ltd TIAS ADM Architects is Angelo Di Martino ABN No.7408

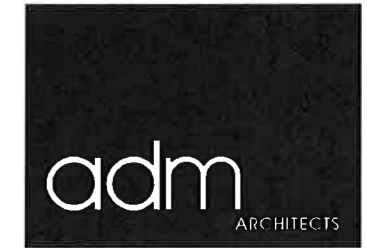
ISSUE	DATE	DESCRIPTION
A	30.05.11	Issued for DA
B	20.09.11	amended for DA approval
C	09.11.11	balconies amended for DA approval

NOT FOR CONSTRUCTION



LEVEL 6 TO 8 FLOOR PLAN

LEVEL 6 FFL 56.400
 LEVEL 7 FFL 59.400
 LEVEL 8 FFL 62.400



94 Kembla St, Wollongong NSW 2500 PO Box 3061 Wollongong
 ph: 02 4228 6400 fax: 02 4228 6455 www.admarchitects.com.au

Project
 RESIDENTIAL DEVELOPMENT COMPRISING OF
 15 X 2 BED UNITS, 17 X 3 BED UNITS &
 2 X 3 BED PENTHOUSE UNITS WITH
 7 VISITORS PARKING SPACES &
 BASEMENT PARKING FOR 56 CARS

At
 LOTS A & B D.P 415263, LOT 2 D.P 331687
 No.32 & 34 CHURCH STREET
 WOLLONGONG

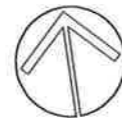
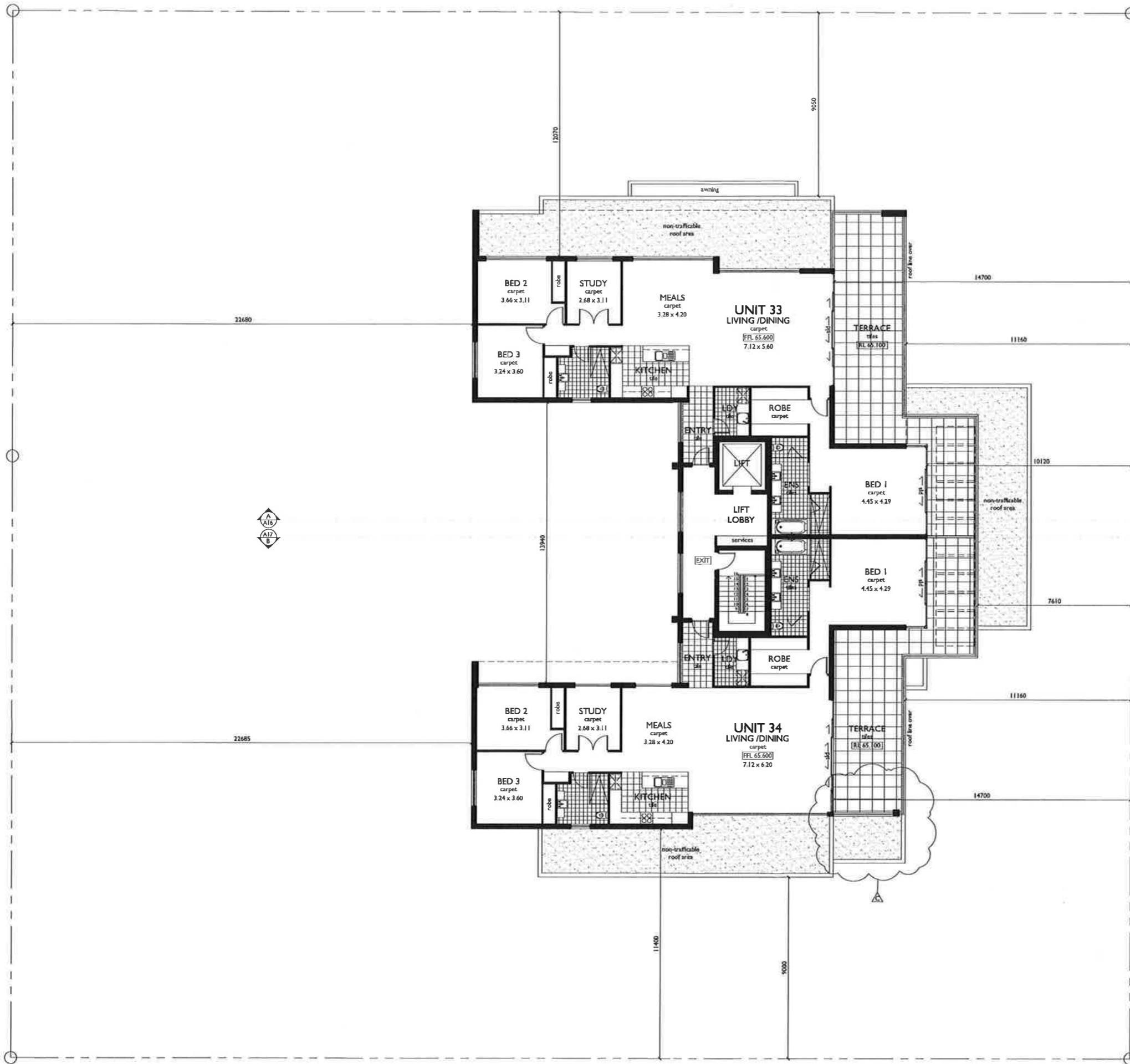
For
PNA DEVELOPMENTS pty ltd

Title
 DEVELOPMENT APPLICATION
 LEVEL 6 TO 8 FLOOR PLAN

Scale	Date
1:100@A1 1:200@A3	JUNE 2011
Drawn	Checked
djm	ADM

Project No.	Drawing No.	Issue
2010-27	A-09	C

copyright of adm architects



LEVEL 9 FLOOR PLAN

LEVEL 9 [F.F.L. 65.600]

© COPYRIGHT - These drawings remain the exclusive copyright of ADM Architects. Reproductions in any form whether electronic, digital or otherwise shall not be allowed except by express permission granted in writing by ADM Architects.
 FIGURED DIMENSIONS - These drawings are not to be scaled. Figured dimensions shall be used in all cases.
 DISCREPANCIES IN DIMENSIONS/POSITIONS/LOCATIONS/FINISHES - The Contractor is to verify any dimensional, location or finish discrepancy with ADM Architects prior to any physical construction or setting out so that ADM Architects is given the opportunity to resolve potential discrepancies or conflicts in sufficient time without causing abortive work. The Contractor shall be responsible for notifying ADM Architects of any such discrepancy or conflict that may arise on site.
 CO-ORDINATION OF WORKS - These drawings are to be read in conjunction with the full set of consultant's drawings, specifications, reports and DA conditions.
 NOMINATED ARCHITECT - The nominated Architect for ADM Projects (Australia) Pty Ltd T/A ADM Architects is Angela Di Martino A.B.N. 7608

ISSUE	DATE	DESCRIPTION
A	30.05.11	issued for DA
B	20.09.11	amended for DA approval
C	09.11.11	balconies amended for DA approval

NOT FOR CONSTRUCTION



94 Kembla St, Wollongong NSW 2500 PO Box 3061 Wollongong
 ph: 02 4228 6400 fax: 02 4228 6455 www.admarchitects.com.au

Project
 RESIDENTIAL DEVELOPMENT COMPRISING OF
 15 X 2 BED UNITS, 17 X 3 BED UNITS &
 2 X 3 BED PENTHOUSE UNITS WITH
 7 VISITORS PARKING SPACES &
 BASEMENT PARKING FOR 56 CARS

At
 LOTS A & B D.P 415263, LOT 2 D.P 331687
 No.32 & 34 CHURCH STREET
 WOLLONGONG

For
PNA DEVELOPMENTS pty ltd

Title
 DEVELOPMENT APPLICATION
 LEVEL 9 FLOOR PLAN

Scale	Date
1:100@A1 1:200@A3	JUNE 2011
Drawn	Checked
djm	ADM

Project No.	Drawing No.	Issue
2010-27	A-10	C

copyright of adm architects

© COPYRIGHT - These drawings remain the exclusive copyright of ADM Architects. Reproductions in any form whether electronic, digital or otherwise shall not be allowed except by express permission granted in writing by ADM Architects.

FIGURED DIMENSIONS - These drawings are not to be scaled. Figured dimensions shall be used in all cases.

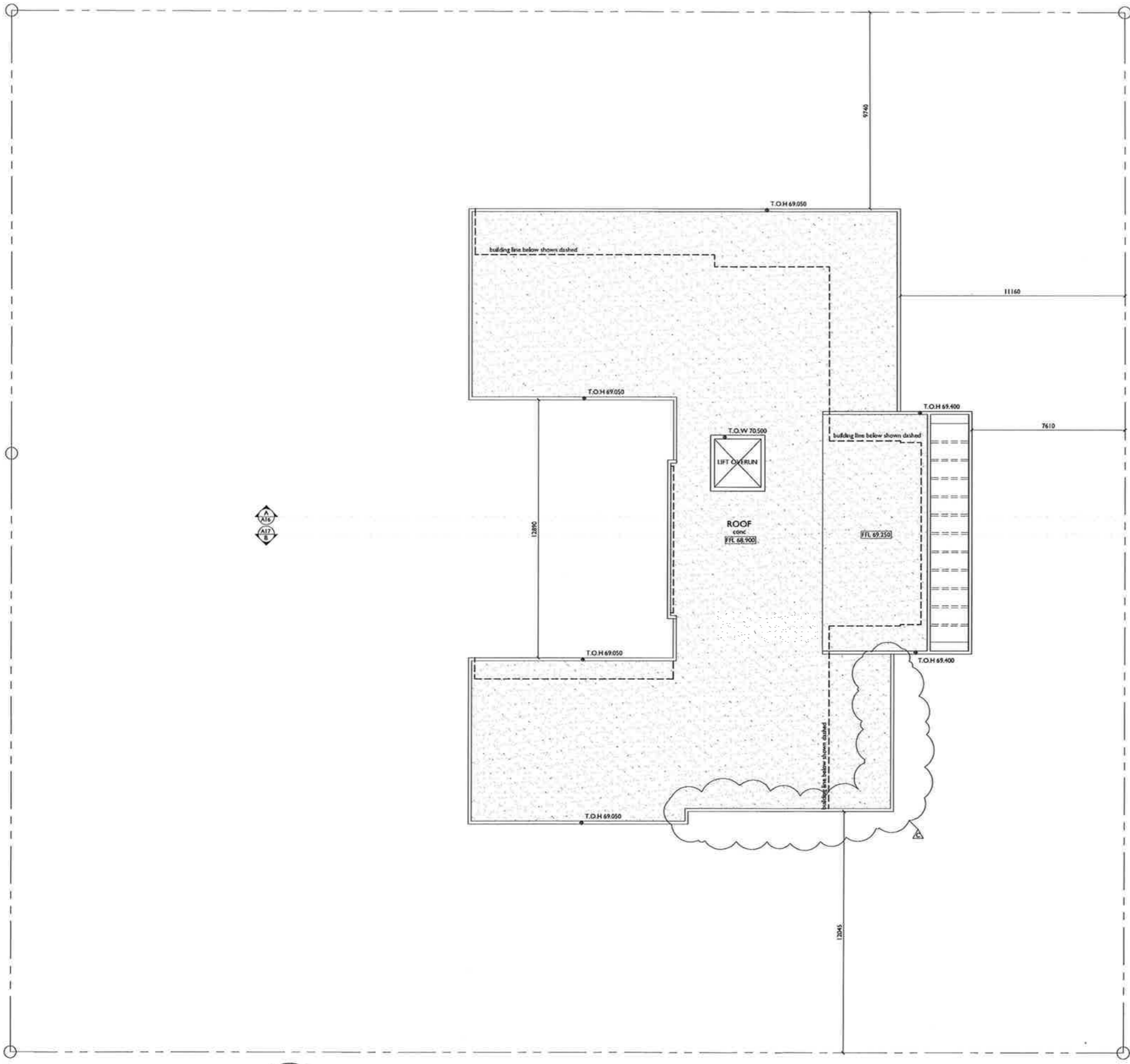
DISCREPANCIES IN DIMENSIONS, POSITIONS, LOCATIONS, FINISHES - The Contractor is to verify any dimensional, location or finish discrepancy with ADM Architects prior to any physical construction or setting out so that ADM Architects is given the opportunity to resolve potential discrepancies or conflicts in sufficient time without causing abortive work. The Contractor shall be responsible for notifying ADM Architects of any such discrepancy or conflict that may arise on site.

COORDINATION OF WORKS - These drawings are to be read in conjunction with the full set of consultant's drawings, specifications, reports and DA conditions.

NOMINATED ARCHITECT - The nominated Architect for ADM Projects (Australia) Pty Ltd TIAS ADM Architects is Angela Di Martino ABB No. 7100.

ISSUE	DATE	DESCRIPTION
A	30.05.11	issued for DA
B	20.09.11	amended for DA approval
C	09.11.11	roof amended for DA approval

NOT FOR CONSTRUCTION



ROOF PLAN
ROOF FFL 69.200



94 Kembla St, Wollongong NSW 2500 PO Box 3061 Wollongong
ph: 02 4228 6400 fax: 02 4228 6455 www.admarchitects.com.au

Project
RESIDENTIAL DEVELOPMENT COMPRISING OF 15 X 2 BED UNITS, 17 X 3 BED UNITS & 2 X 3 BED PENTHOUSE UNITS WITH 7 VISITORS PARKING SPACES & BASEMENT PARKING FOR 56 CARS

At
LOTS A & B D.P 415263, LOT 2 D.P 331687 No.32 & 34 CHURCH STREET WOLLONGONG

For
PNA DEVELOPMENTS pty ltd

Title
DEVELOPMENT APPLICATION ROOF PLAN

Scale 1:100@A1 1:200@A3	Date JUNE 2011
Drawn dif	Checked ADM

Project No. 2010-27	Drawing No. A-11	Issue C
------------------------	---------------------	------------

copyright of adm architects